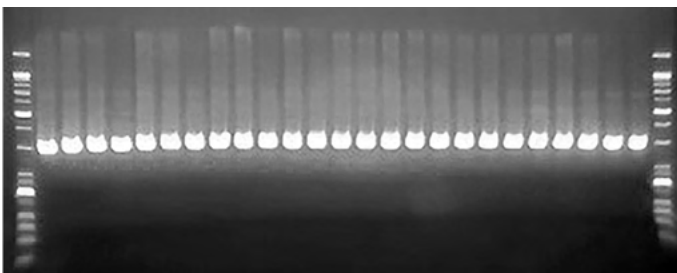


# DuxCycler

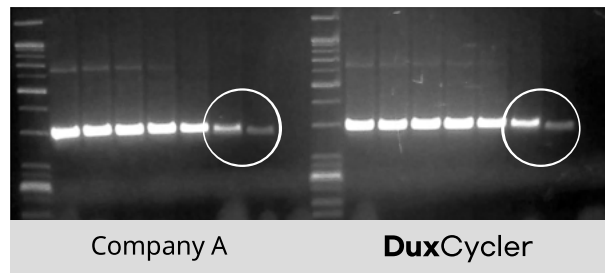


## Examples of amplification results

The images below were taken with **DuxGeldoc**.



[ **DuxCycler** 25 Wells Validation Test ]



Company A

**DuxCycler**

Lane 1 1X10<sup>0</sup> copy/μl  
Lane 2 1X10<sup>0</sup> copy/μl  
Lane 3 1X10<sup>1</sup> copy/μl  
Lane 4 1X10<sup>1</sup> copy/μl  
Lane 5 1X10<sup>2</sup> copy/μl  
Lane 6 1X10<sup>2</sup> copy/μl  
Lane 7 1X10<sup>2</sup> copy/μl  
Lane 8 Negative control

[Comparative Experiment : **DuxCycler** & Company A ]



## Characteristics

- 1 Compact and light, saving space.**  
Available as a personal amplification device with a compact size of 15cm x 15cm and a light weight of 1.5kg.
- 2 Up to 8 DuxCycler connect to 1 operating system.**  
Connect and operate on mobile (iPhone, Android) devices as well as PC environments such as Windows, Mac and iOS.
- 3 Simple operation(S/W)**  
Intuitive GUI for easy operation.

## Specification

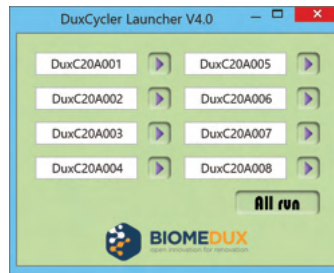
### Physical Specification

|                                |                    |
|--------------------------------|--------------------|
| Dimension (W x D x H)          | 150 x 150 x 150 mm |
| Weight                         | 2.5 Kg             |
| Chamber well / tube            | 25 wells / 0.2mL   |
| Input volt / power consumption | 110~220V / 120W    |

### Operation Specification

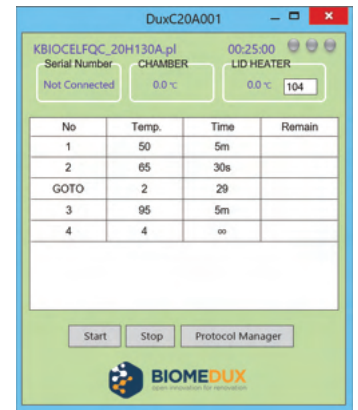
|                                       |  |
|---------------------------------------|--|
| Heating method                        | Peltier  |
| Cooling method                        | Peltier / Air cooling                                    |
| Operation temperature of Chamber well | 4°C~100°C  |
| Temperature accuracy / uniformity     | ± 0.2°C / ± 0.2°C  |
| Over shoot                            | < 0.5°C  |
| Ramp rate                             | 2.5°C/sec (heating)<br>1.5°C/sec (cooling)               |
| Lid temperature                       | 25~110°C   |
| State notice (LED)                    | Blue: normal operation<br>Red: Failure<br>Green: Waiting |

## Intuitive GUI



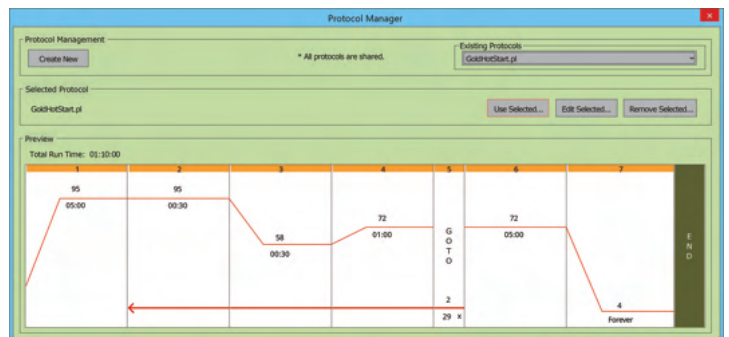
Connecting Screen

Up to eight **DuxCyclers** can be connected and operated on one operating system.



Status Screen

Enable real-time progress of each device.



Protocol Manager Screen

**BIOMEDUX**  
open innovation for renovation

**PRO TECH**  
波仕特生物科技



台北 02-26557677 | 台中 04-22624883 | 新竹 03-5753468 | 竹南 037-680138 | 高雄 07-3425707 | 東部 03-8463953

WWW.BIOMEDUX.COM

