

DuxGeldoc



The **DuxGeldoc** specially designed allows high definition images of electrophoresis gel to acquire for documentation. The low-cost Raspberry camera ver 2.0 is adopted to capture high quality gel images. The compact and convenient device take little space. The darkroom is designed to produce high resolution image. Enjoy the high definition gel image using the **DuxGeldoc**.

Characteristics

- 1 High-definition video based on CMOS camera.**
equipped micro-camera allows high-definition video shooting.
- 2 Compact and light, saving space.**
Compact and convenient device saving valuable bench space.
- 3 Simple operation(S/W)**
You can save the image file with one click.
- 4 Well-designed darkroom**
The darkroom is designed to produce a high-resolution image.



Specification

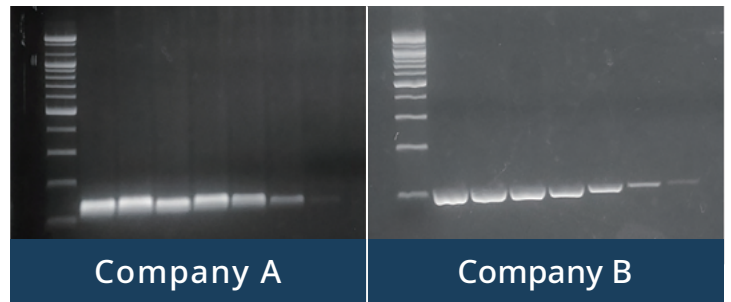
Physical Specification

Dimension (W x D x H)	282 x 282 x 289 mm
Weight	3.1 Kg
Gel size	Maximum : 120 x 150 mm
Input Voltage	110V / 240V

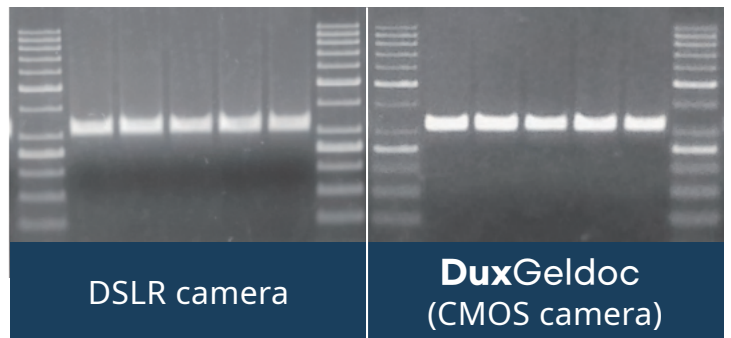
Operation Specification

Camera	Sony CMOS Camera (IMX179)
Resolution (Maximum)	3280 x 2464 (4K)
Illumination	UV
PC OS	Windows 10
Interface	USB
Storage	8GB or more

Comparative Experiment (Loading buffer)



Comparison of Resolution



BIOMEDUX
open innovation for renovation

WWW.BIOMEDUX.COM



台北 02-26557677 | 台中 04-22624883 | 新竹 03-5753468 | 竹南 037-680138 | 高雄 07-3425707 | 東部 03-8463953