



PRACTICAL INNOVATION



Samples *Scan, Track, Go!*

Overview

Samples is a software management tool to help keep your samples organised. **Samples** will streamline your workflow by providing an organised storage system to track and maintain your samples.

All information that you enter into **Samples** can be searched using the **Samples** search panel. Sample information can be imported or exported and shared with colleagues.

Samples and DataPaq™ Scanners

Samples integrates with Ziath's DataPaq™ 2D barcode readers, allowing for high speed scanning of sample racks. The **Samples** application can directly control the scanner and import the result of the scan into **Samples**. Additional storage information can also be added to the import.

Samples also imports the data read from a DataPaq™ Linear Barcode reader.

Once imported, further sample details can be added for each sample, including Box, Shelf, Freezer / Incubator, Room and Building.

During a scan, if **Samples** identifies a barcode that already exists in its database, it will prompt the user to verify they wish to move the sample to the new location, therefore maintaining an up-to-date location and effective sample management.



Click on Scan



Enter Rack Barcode



The scan results are imported into Samples

Features

- Scan, track and maintain your samples
- Integrates fully with Ziath DataPaq™ 2D barcode scanners
- Search, export and import sample information
- Archive samples and add custom tracking tags
- Ziath's expertise and support come as standard

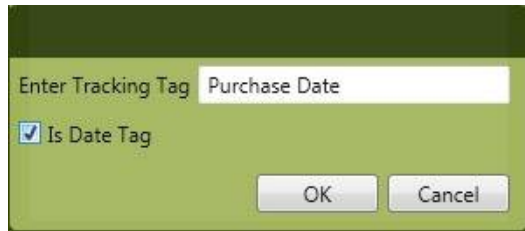


Custom Tracking Tags

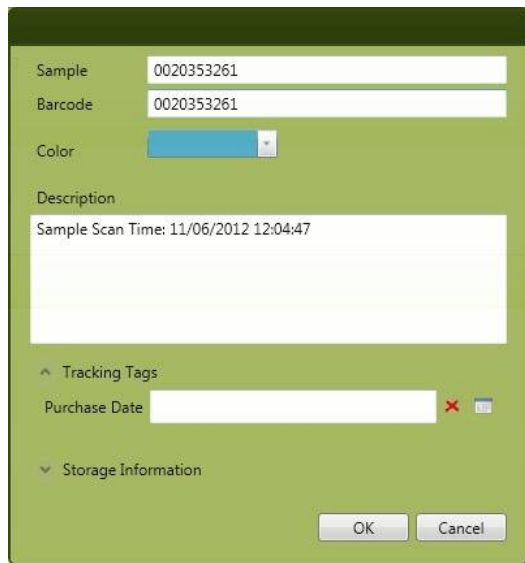
Samples provides for standard storage information. However, this set of information may be inadequate for all users and customised tracking tags might be required.

Clicking on "Tracking Tags" in the menu bar launches a new window where the customised tracking tags can be added. The tag can be either a text field or a date-time field.

Once a new Tracking Tag has been added it will automatically appear in the "Add Sample" window for future scans

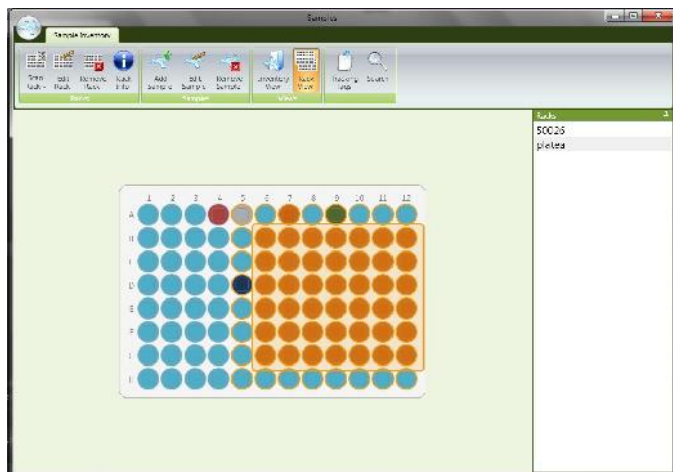


Adding a date-style tracking tag



The custom Tracking Tag appears when editing or adding a new sample

Rack View



Rack View shows a graphical representation of a single plate scan. Clicking and dragging the mouse over the plate to "rubber-band" the samples allows editing of a group of samples. The image (above) shows the selected group of samples colour-coded orange, in just a couple of clicks.

Samples make sample storage and management easy. For more information, please see our website or contact us on the numbers of email address given below.



Scan, Track, Go!